

Phase II Reopening of School

2nd, 3rd, 4th & 5th Grade
October 5, 2020



Coral Reef Elementary
Leading The Way

What is new at CRE?

School Hours:

M, T, Th, F 8:35 – 3:05

Wednesdays 8:35 – 2:05

Signage

One Way Entrance and Exit in Cafeteria

One Way Hallways

Face Mask/Coverings Required

Where to stand when waiting

Before School Care (BSC)

Cafeteria used to House BSC

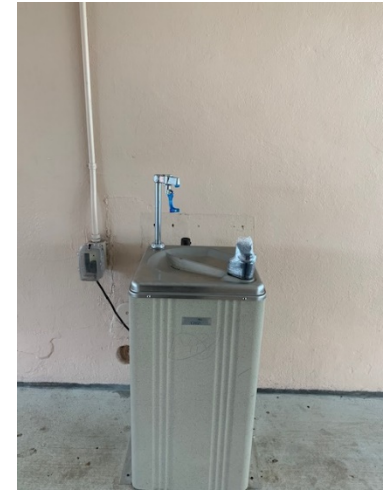
BSC to start October 12, 2020



CRE is READY!!!

Supplies


- Hand Sanitizer in “high traffic” areas
- Hand Sanitizer in each classroom
- Sinks in each classroom
- Bathrooms in 20 of the 29 classrooms
- Disposable masks for students who may be in need
- Water bottles for students who may forget theirs
- Water bottle fillers throughout campus



Arrival - Staff

- Teachers work schedules have been staggered
 - 8:00 – 3:05 (assist with morning arrival)
 - 8:30 – 3:35 (assist with dismissal)
 - Teachers will report to their classrooms to wait for their students





Arrival –First Day of School

- Arrival will be at the circular drive
- Staff will greet students at the circular drive and assist those who do not know where their classroom is located
- Students will report directly to their classrooms



Dismissal

- Students will stay in their class until their Family Number appears on the Promethean Board
- Teacher/Staff Member will escort the student to the circular drive
- Students attending ASC will be picked up by their Leader

Supplies

Parents may drop off supplies when they drop off their children in the morning or the afternoon at pick up.

Have child's name and teacher on supplies

Staff will place supplies on flatbed and deliver to their child's class

Supplies may be brought in throughout the week



Student Workbooks & Personal Supplies

Students may bring their workbooks to school where they will be used in class

Each student's supplies will remain in their desk. They will not be shared.



Recess

Conducted Daily for 20 minutes

Outside, weather permitting



After School Care

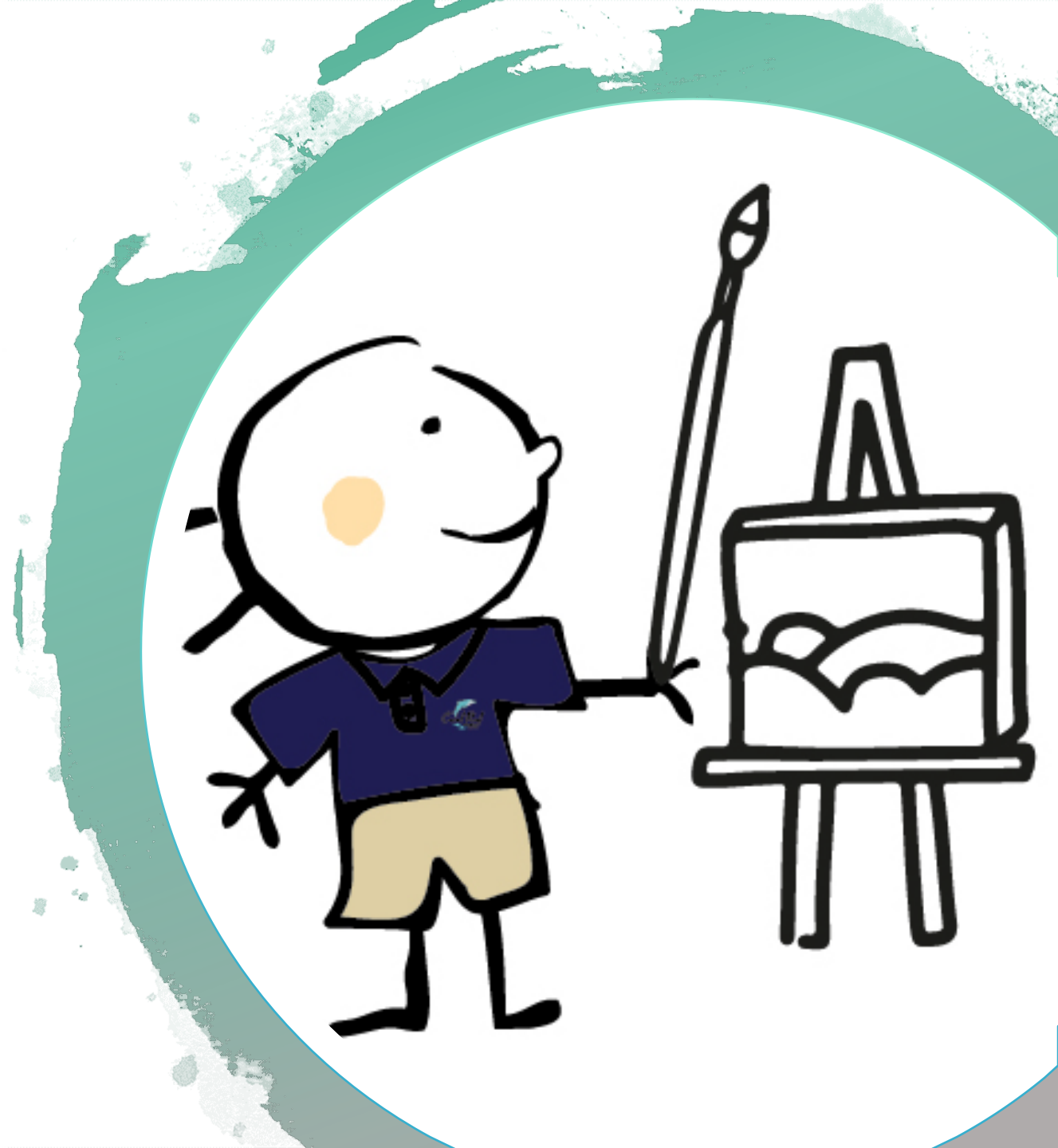
Story Hour – 2:05 – 3:05 pm (\$6 daily)

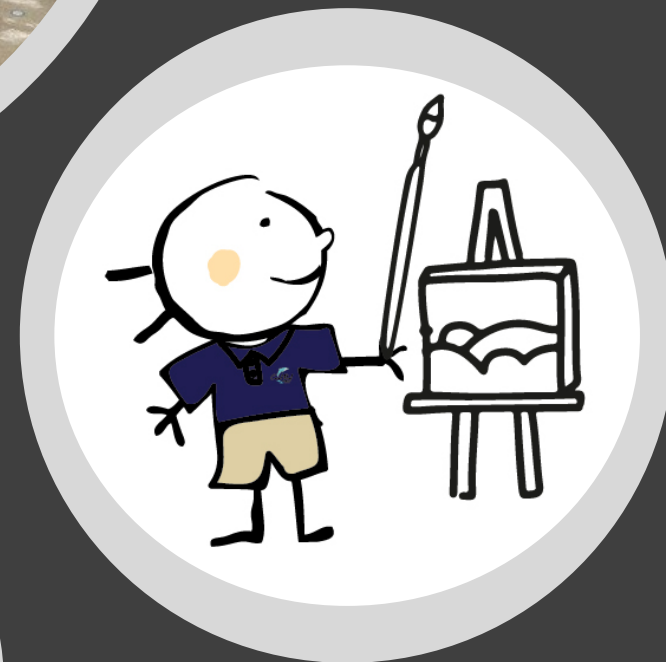
ASC – 2:05 – 6:00 pm (\$12 daily)

Picked up in the front

Before School Care (\$6 daily)

begins October 12





Classroom Set up

Student desks are placed at 5.5 feet apart

Desks are all facing the front



Instructional Program

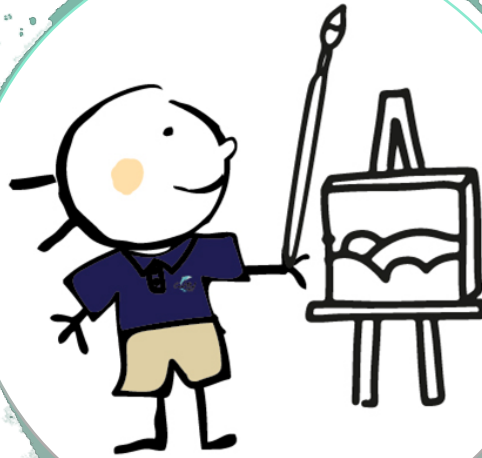
Brick & Mortar – 5 days a week

Self-Contained Model

Teachers travel to classes (Art, Music, Spanish) to minimize transitions

Teachers may use the Promethean Board for in-class instruction.

Teachers may have students bring in devices.



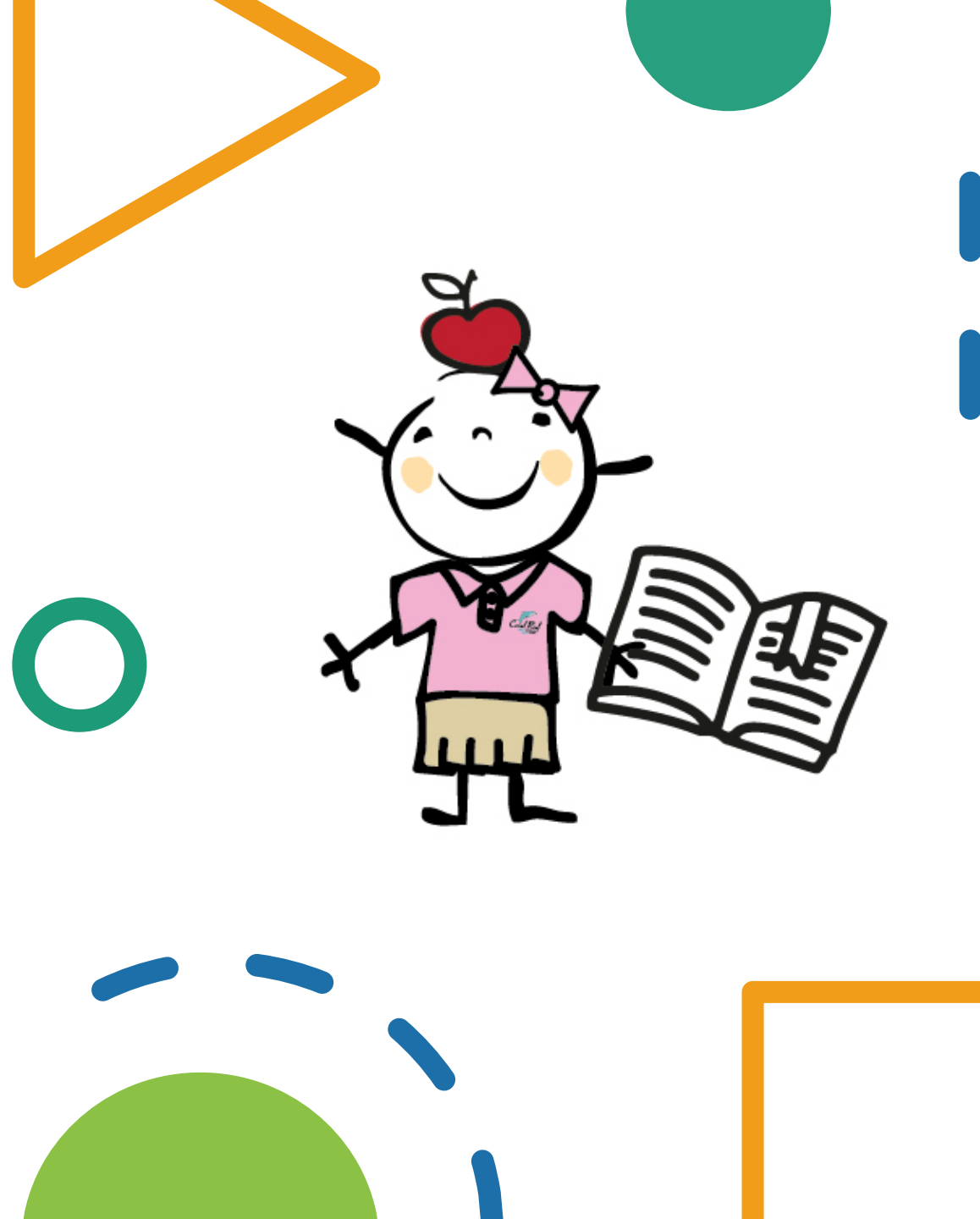
A vertical strip of seven cartoon children engaged in various activities. From top to bottom: a girl with a red apple reading a book; a boy singing with musical notes; a boy painting on an easel; a boy with a soccer ball; a boy holding a flag; a boy with a flag; and a boy with a microscope and an atom symbol.

Bottle filler replaces drinking spout.



Breakfast - free

**Students may
eat in the
courtyard area,
weather
permitting.**



Lunch - free

May bring lunch from home or eat cafeteria lunch provided.

Students eating in cafeteria



Sanitation

- 5 Custodians to clean throughout day
 - 2 in cafeteria
 - 3 cleaning campus
- Classroom deep cleaned 1 – 2 weekly
- Classroom cleaning:
 - Cleaned/sanitized while students at lunch
 - Doors and windows opened at dismissal
 - Room to remain open to let air circulate for 1 – 2 hours
 - Doors and windows to be closed once room is cleaned/sanitized



Uniforms

- Required Daily
 - Uniform Top with Logo
 - Kaki or Navy Bottoms
- Spirit Days Wednesdays

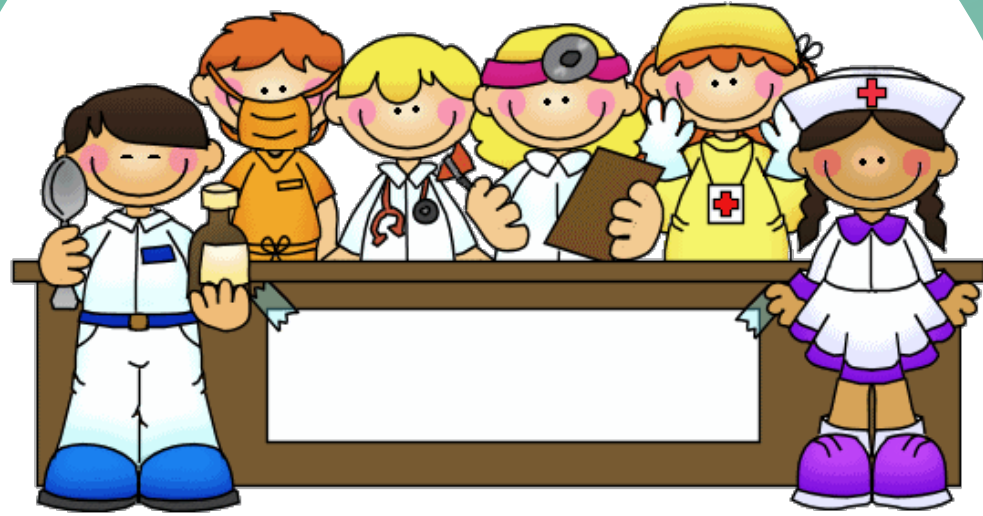


Clubs



- Clubs will be conducted in a virtual format
- Clubs Include:
 - Safety Patrol
 - FEA
 - Youth Crime Watch
 - Art Club
 - Book Club

What will happen if my child is not feeling well while at school?



- **The school has identified one designated **ISOLATION ROOM****
- **A full-time school nurse will assess student.**
- **A Parent/Guardian will be contacted by administration and the student **MUST** be picked up at that time.**
- **The child's doctor should be notified for further advisement.**
- **If a child or employee has**
 - **Been exposed to someone with Covid-19**
 - **Experiencing symptoms of Covid-19****Health Department and M-DCPS Comprehensive Health Department will be notified immediately and the appropriate tracing and notification procedures will be implemented**

Mitigating Outcomes

- **Student to Quarantine**
- **Class to Quarantine**
 - **Class reverts to Virtual Platform**
- **School to Quarantine**
 - **School pivots to Virtual Platform**



Will visitors be allowed on campus during Stage II?

- Visitors are allowed by appointment only and will be required to have temperature checks and complete questionnaires upon arrival.
- Parent/Teacher Conferences will be held via virtual setting.
- The window on the south side of the Main Office will continue to be used to have parents drop off or pick up items such as devices.
- Schoolwide events, including Open House, will all take place in a virtual setting.
- PTA will continue to hold events in a virtual setting. For example, current virtual book fair and PTA Meetings.



Q & A
Time



Coral Reef Elementary
Leading The Way