

# Phase II Reopening of School

**Pre-K, Kindergarten &  
1<sup>st</sup> Grade  
October 5, 2020**



# What is new at CRE?

**School Hours: 8:35 – 2:05**

## **Signage**

**One Way Entrance and Exit in Cafeteria**

**One Way Hallways**

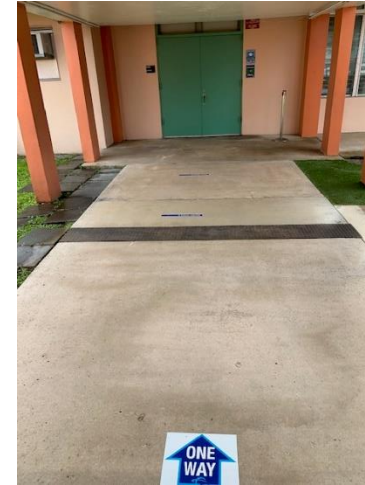
**Face Mask/Coverings Required**

**Where to stand when waiting**

**Before School Care (BSC)**

**Cafeteria used to House BSC**

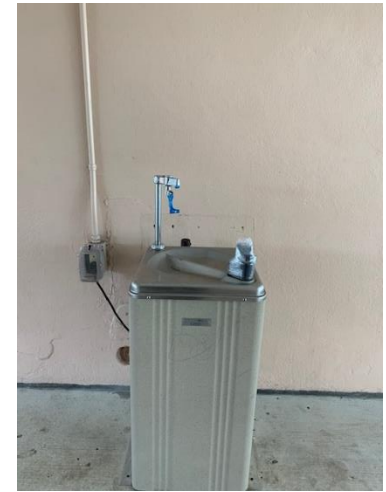
**BSC to start October 12, 2020**



# CRE is READY!!!


## Supplies

- Hand Sanitizer in “high traffic” areas
- Hand Sanitizer in each classroom
- Sinks in each classroom
- Bathrooms in 20 of the 29 classrooms
- Disposable masks for students who may be in need
- Water bottles for students who may forget theirs
- Water bottle fillers throughout campus





# Arrival - Staff

- Teachers work schedules have been staggered
    - 8:00 – 3:05 (assist with morning arrival)
    - 8:30 – 3:35 (assist with dismissal)
    - Teachers will report to their classrooms to wait for their students
- 



# Arrival –First Day of School

- Pre-K
  - Arrival will be at the first gate in the circular drive.
  - Teachers will greet students at the entrance to the gate and escort them into their classroom
  - Para Professional will wait with students in the classroom
- Kindergarten and First Grade
  - Arrival will be at the circular drive
  - Teachers will greet their students at the circular drive and escort them to their classroom
  - Coverage will be provided to remain with students in the classroom





# Dismissal

- Students will stay in their class until their Family Number appears on the Promethean Board
- Teacher/Staff Member will escort the student to the circular drive
- Students attending ASC will be picked up by their Leader

# Supplies

**Parents may drop off supplies when they drop off their children in the morning or the afternoon at pick up.**

**Have child's name and teacher on supplies**

**Staff will place supplies on flatbed and deliver to their child's class**

**Supplies may be brought in throughout the week**



# Student Workbooks & Personal Supplies

**Students may bring their workbooks to school where they will be used in class**

**Each student's supplies will remain in their desk. They will not be shared.**





# After School Care

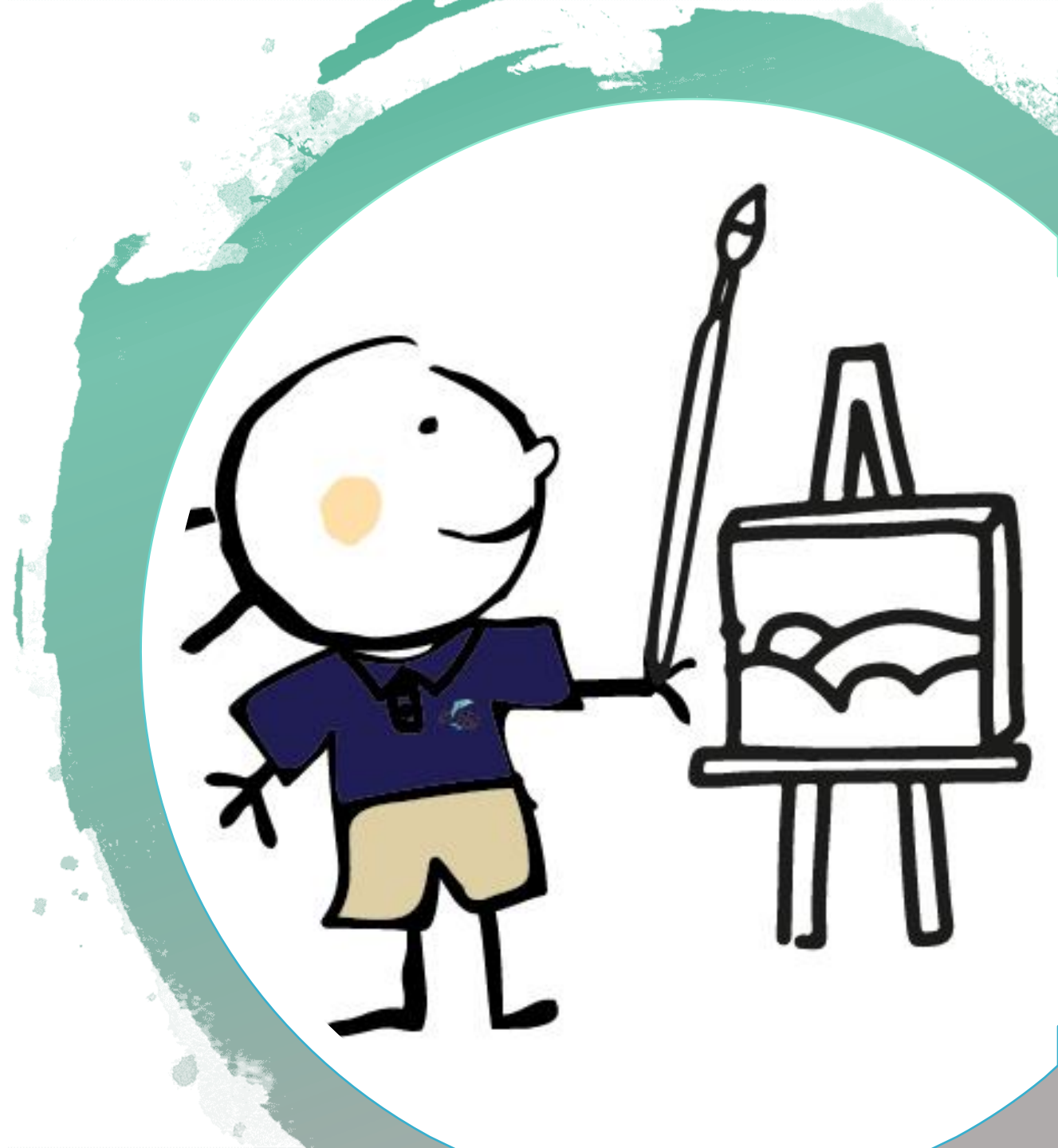
**Story Hour – 2:05 – 3:05 pm (\$6 daily)**

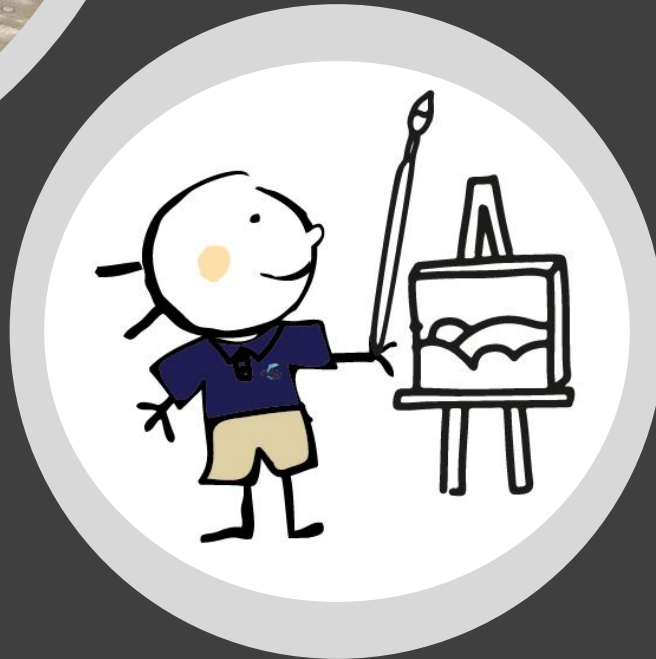
**ASC – 2:05 – 6:00 pm (\$12 daily)**

**Picked up in the front**

**Before School Care (\$6 daily)**

**begins October 12**





# Classroom Set up

**Student desks are placed at 5.5 feet apart**

**Desks are all facing the front**





# Instructional Program

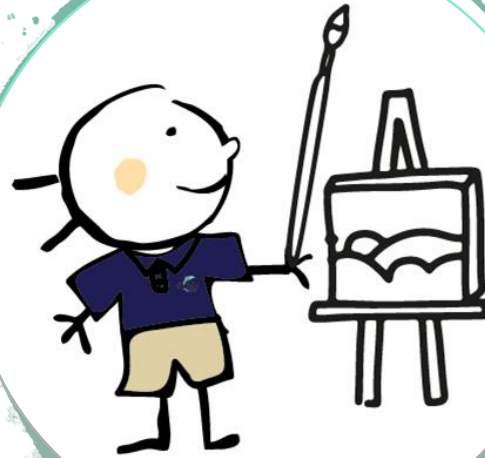
**Brick & Mortar – 5 days a week**

**Self-Contained Model**

**Teachers travel to classes (Art, Music, Spanish) to minimize transitions**

**Teachers may use the Promethean Board for in-class instruction.**

**Teachers may have students bring in devices.**





# What is new in the Cafeteria?

**Hand Sanitizer in Entry and Exit of Cafeteria**

**Desks replace tables**

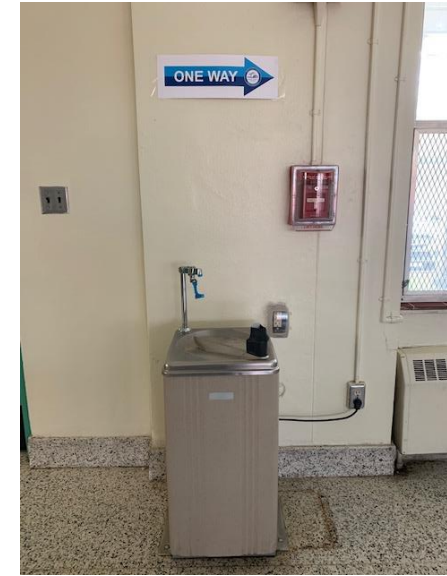
**Desks are 6 ft apart**

**Only place students may take off masks/face coverings**

**Breakfast and Lunch – FREE through December**

**Desks cleaned after every student leaves**

**Bottle filler replaces drinking spout.**



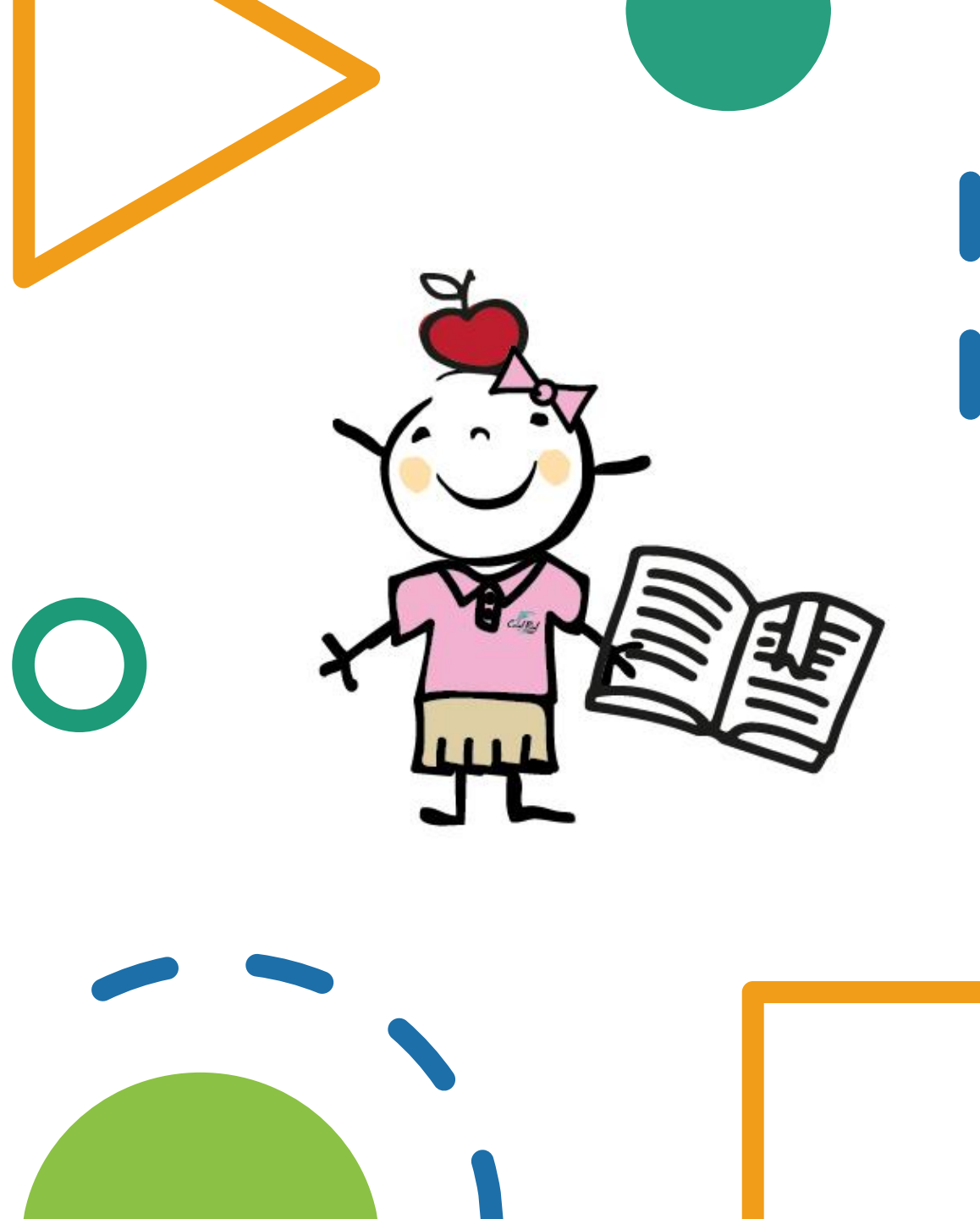
**Breakfast - free**

**Pre-K**

**Students eating in classroom**

**Kindergarten & 1<sup>st</sup> Grade**

**Students eating in courtyard  
area**



# Lunch - free

**May bring lunch from home or eat cafeteria lunch provided.**

**Pre-K**

**Students eating in classroom**

**Kindergarten & 1<sup>st</sup> Grade**

**Students eating in cafeteria & classroom**





# Lunch - free

**May bring lunch from home or eat cafeteria lunch provided.**

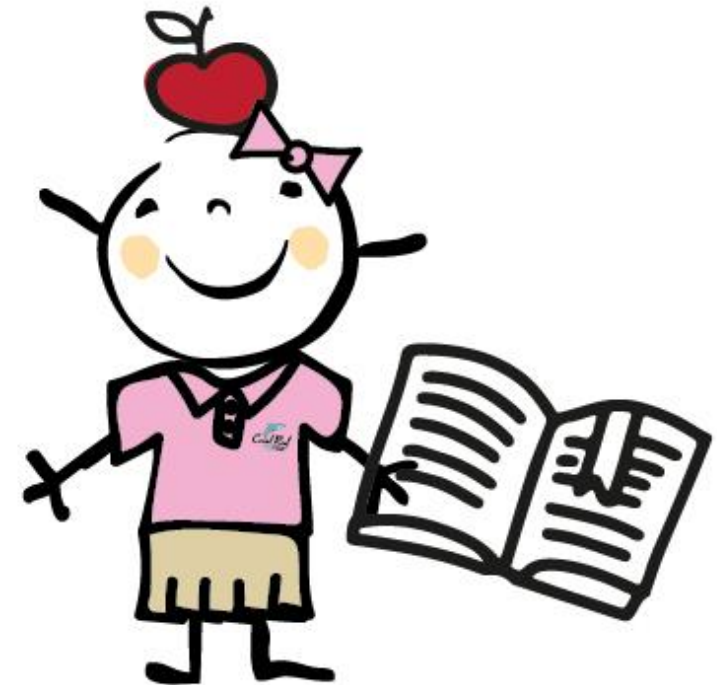


**Pre-K**

**Students eating in classroom**

**Kindergarten & 1<sup>st</sup> Grade**

**Students eating in cafeteria & classroom**



What will happen if my child is not feeling well while at school?



- The school has identified one designated **ISOLATION ROOM**
- A Parent/Guardian will be contacted by administration and the student **MUST** be picked up at that time.
- The child's doctor should be notified for further advisement.
- If a child or employee has been tested positive for **COVID-19** the Health Department and **M-DCPS Comprehensive Health Department** will be notified immediately and the appropriate tracing and notification procedures will be implemented.

# Will visitors be allowed on campus during Stage II?

- Visitors are allowed by appointment only and will be required to have temperature checks and complete questionnaires upon arrival.
- Parent/Teacher Conferences will be held via virtual setting.
- The window on the south side of the Main Office will continue to be used to have parents drop off or pick up items such as devices.
- Schoolwide events, including Open House, will all take place in a virtual setting.
- PTA will continue to hold events in a virtual setting. For example, current virtual book fair and PTA Meetings.



Q & A  
Time

